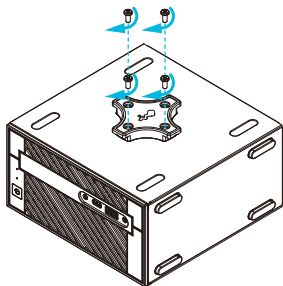


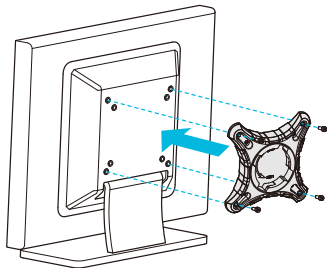


VESA Mount Kit for DeskMini 110

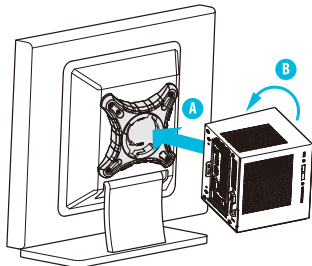
Installing the VESA Bracket (Optional)



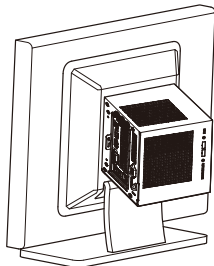
- 1** Secure the VESA Bracket to the right side panel of the DeskMini 110 series by using the four screws.



- 2** Attach the other VESA Bracket to the rear of a compatible display using the four screws. *Choose mounting holes depending on the mounting hole pattern of your LCD screen (75 mm x 75 mm or 100 mm x 100 mm).



- 3** Mount the DeskMini 110 series by turning it counterclockwise.



- 4** Complete.

